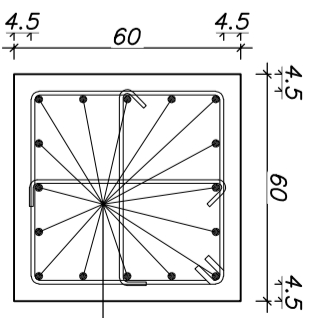


**C-1**  
NO. = 5  
Scale 1:75

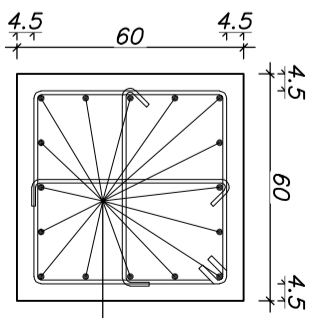
**C-2**  
NO. = 7  
Scale 1:75

**C-3**  
NO. = 2  
Scale 1:75

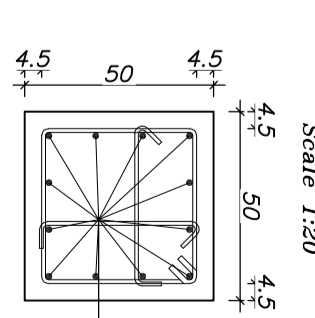
**C-4**  
NO. = 2  
Scale 1:75



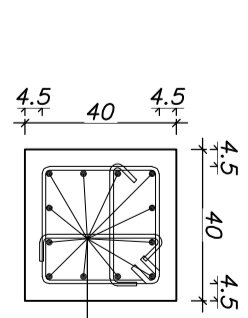
**SEC 1-1**  
Scale 1:20



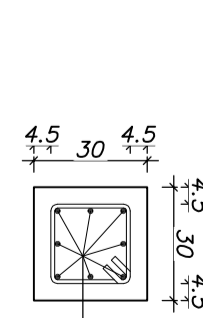
**SEC 2-2**  
Scale 1:20



**SEC 3-3**  
Scale 1:20



**SEC 4-4**  
Scale 1:20



**SEC 5-5**  
Scale 1:20